

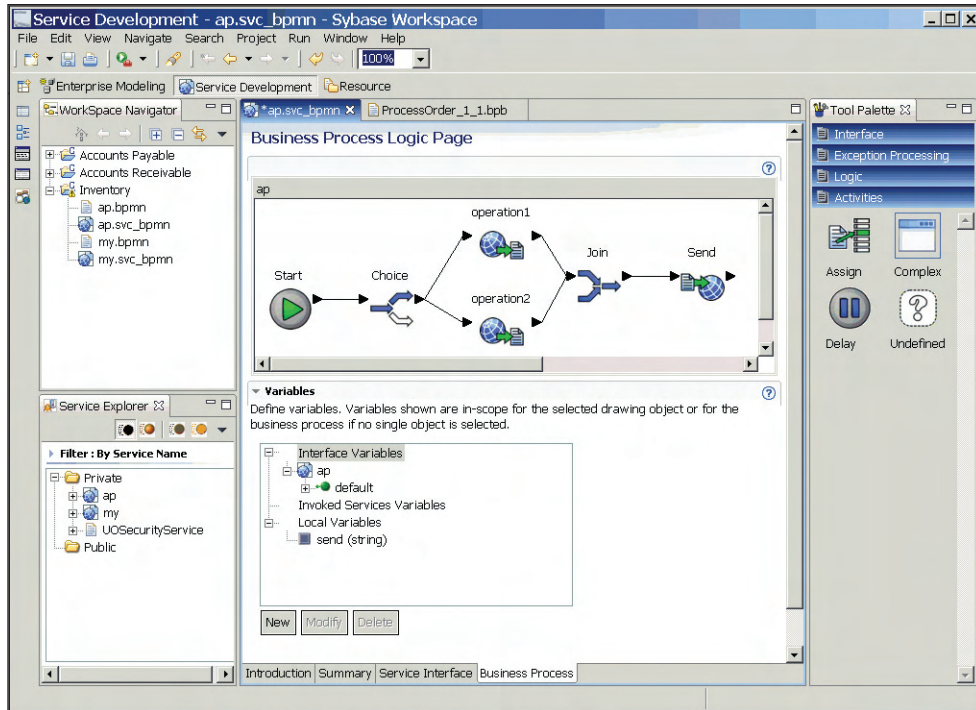
Eclipse

Resource Guide

- A message from Eclipse Executive Director, Mike Milinkovich
- More than 50 detailed product listings for Eclipse-based products, plug-ins, and services
- A complete list of Eclipse Foundation members and their URLs, including strategic members, add-in providers, and associates

Sybase® WorkSpace

The first truly unified development environment that rapidly delivers virtually any type of application.



With Sybase WorkSpace, you can easily develop a range of applications - from Java components to data-driven, mobile and composite applications, and beyond. WorkSpace is a comprehensive and unique development environment that leverages the Eclipse framework for its extensibility, flexibility and the tremendous benefits of open-source technology. As one of the first development environments to take full advantage of SODA (Services-Oriented Development of Applications) as well as MDDA (Model-Driven Development of Applications) and VRAD (Visual Rapid Application Development), WorkSpace empowers developers to leverage productivity features while using the flexibility of code for more complicated scenarios.

Visit www.sybase.com/eclipse to learn more about Sybase WorkSpace, SODA and Eclipse.

WorkSpace's rich graphical environment takes you through the stages of service development by simplifying the links between heterogeneous infrastructures such as databases, messaging systems, and enterprise applications.

SYBASE®

Sybase, Inc.

One Sybase Drive

Dublin, CA 94568

Phone: 800-8SYBASE

Web: www.sybase.com

Welcome to the Eclipse Ecosystem

Commercial adoption of an open, free, and transparent platform for tools integration is key to Eclipse's success

Over the past three years, Eclipse has enjoyed incredible success in the Java development community. By most reports 60 percent of Java developers use Eclipse for their Java IDE. When Eclipse was first launched in November 2001, the goal was to create a development platform that easily enabled creating and integrating developer tools. The vision was to have a pervasive platform that the software industry, and specifically the developer tool industry, could leverage as a common developer workbench and platform for integration and interoperability. At the same time, the Eclipse project also set out to build a world-class Java IDE that would act as an exemplary tool for the platform. By all measures Eclipse has achieved that vision.

A critical factor to the success enjoyed by Eclipse has been the strong ecosystem of independent software vendors (ISVs)—both small and large—and other open source communities creating plug-ins for the Eclipse platform. From the beginning, the emphasis has always been that commercial adoption of open source technology is an important measurement of success. Eclipse has provided an open, free, and transparent platform on which ISVs can integrate their tools.

Today, the Eclipse Foundation has close to 100 member organizations building Eclipse-based products. By some estimates there are over 800 different Eclipse plug-ins available, and SourceForge lists over 500 different open source projects related to Eclipse. This vibrant ecosystem gives the end user—the developer—the choice of picking the right tools from different vendors for the task at hand. The Eclipse platform provides the common component model and integration platform to enable users to source tools from competing vendors.

This Eclipse Resource Guide provides an excellent resource for understanding the breadth and depth of the Eclipse ecosystem. In it you will find some of the many Eclipse-related commercial and open source plug-ins. We hope it will provide a valuable resource for identifying the tools you need to build great Java applications.

*Mike Milinkovich
Executive Director
Eclipse Foundation*

Eclipse Products, Plug-Ins, and Services

This section provides a list of products, plug-ins, tools, and services for developers using the open source Eclipse platform. Companies are listed alphabetically and include company contact information and product descriptions.

For additional Eclipse-based products, tools, and services that support open source development, visit www.ftponline.com/products/default.asp?top_cat_id=15.

While the publisher's (Fawcette Technical Publications) intent is to provide the most accurate and comprehensive information possible, the manufacturers are ultimately responsible for the accuracy of data and product claims. For more information about any specific product, please contact the manufacturer directly.

Aldon

Tel: 800.825.5858; 510.83.3535

Web: www.aldon.com

E-mail: info@aldon.com

Add-Ins

Aldon Lifecycle Manager

A software configuration-management system that manages software applications from inception, through each maintenance release, until retirement. Through automated development-process control and user-role-based views, you can develop, deploy, and manage applications across multiple environments and project teams.

Altova

Tel: 978.816.1600

Web: www.altova.com

E-mail: us-sales@altova.com

Tools

Altova XMLSpy 2005 Enterprise Edition with Integration Package for Eclipse

An XML development environment for modeling, editing, debugging, and transforming all XML technologies, and then generating run-time code automatically in multiple programming languages. You can seamlessly use its views and function-

ality directly inside Eclipse for enhanced development.

Altova XMLSpy 2005 Professional Edition with Integration Package for Eclipse

An XML development environment that provides intuitive editing views and powerful XML utilities to model, edit, transform, and debug XML technologies quickly and easily. You can seamlessly use its views and functionality directly inside Eclipse for enhanced development.

Axizon Technologies Inc.

Tel: 604.729.6999

Web: www.axizon.com

E-mail: june@axizon.com

Add-Ins

Tiger XSLT Mapper

A simple, powerful development environment in which mappings between XML structures are created automatically and can be edited using the drag-and-drop visual interface. While the mappings and XML structures are modified, the XSLT template is generated and modified automatically.

Eclipse Products and Services

Borland Software Corporation

Tel: 831.431.1000

Web: www.borland.com

Tools

Borland Together Edition for Eclipse

An integrated, industry-standard UML modeling environment for designing new applications, as well as extracting design information from existing applications.

Cibersql LLC

Tel: 800.893.4970

Web: www.cibersql.com

E-mail: info@cibersql.com

Tools

Cibersql Web Admin

A Web-based software application that allows companies to securely manage, develop, and administer Microsoft SQL Server databases over the Internet.

In addition to most of the functionality found in Enterprise Manager, there are many new innovative features such as instant data export to many different formats including Excel, RTF, XML, and PowerPoint.

Craig Setera

Web: <http://eclipseme.org/>

Add-Ins

EclipseME

An Eclipse plug-in to help you develop J2ME MIDlets by doing the "grunt work" of connecting wireless toolkits to the Eclipse development environment, allowing you to focus on developing your application rather than worrying about the special needs of J2ME development.

db4objects Inc.

Tel: 650.577.2340

Web: www.db4o.com

E-mail: info@db4o.com

Add-Ins/Embedded

db4o 4.3

An open-source object database for Java and .Net that is freely available under the GPL and also under a commercial license. It can persist any native object with a single line of code and allows you to experience true object orientation. Features include ACID transactions, query by example, SODA query API and automatic class schema recognition, and a small footprint.

Eclipse Foundation

Tel: 613.224.9461 ext. 227

Web: www.eclipse.org

Tools

Eclipse

The Eclipse Platform is designed for building integrated development environments (IDEs) that can be used to create applications as diverse as Web sites, embedded Java programs, C++ programs, and Enterprise JavaBeans.

eclipsefp.sf.net

Web: <http://eclipsefp.sf.net>

Tools

Functional Programming Support (Haskell, OCaml)

Extends the Eclipse IDE to support development in functional programming languages (Haskell, OCaml). The goal is to provide support for a wide range of tools (compilers, interpreters, and doc tools) and a convenient and configurable environment.

Enerjy Software

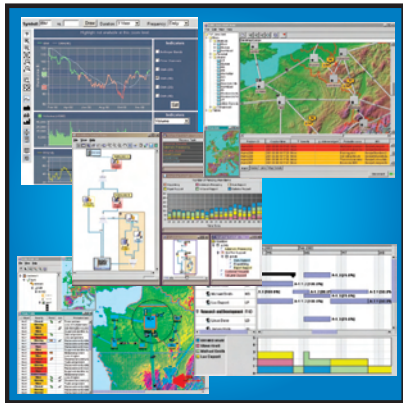
Tel: 978.816.6243

Web: www.enerjy.com

E-mail: sendinfo@enerjy.com

ILOG JViews

Advanced programmable graphics components for quickly building sophisticated GUIs for Eclipse.



Embed rich, graphical Java displays such as charts, diagrams, maps, and schedule displays into your Eclipse-based applications. ILOG JViews components and tools deliver unsurpassed displays, shortening Java development, cutting costs, reducing risk -- and improving the user's experience. There's a JViews product for every visualization need:

ILOG JViews Diagrammer - Quickly configure complex diagrams with a comprehensive set of layout algorithms and editing tools that help you create a broad range of modeling and monitoring applications.

ILOG JViews Charts - Create dynamic, interactive charts for both desktop and Web interfaces.

ILOG JViews Gantt - Build comprehensive planning and scheduling displays that include resource and task views, and resource load charts.

ILOG JViews Maps - Produce custom, data-aware maps and graphics for asset management.

ILOG JTGO (JViews Telecom Graphic Objects) - Build dynamic GUIs that intuitively display network and service topologies with real-time states, using major communications state and alarm standards.



ILOG, Inc.

889 Alder Avenue, Suite 200

Incline Village, NV 89451

Phone: 775-881-2800

Fax: 775-881-2801

Email: info@ilog.com

Web: www.ilog.com

Free Evaluation

Discover how quickly you can develop sophisticated GUIs.

Try a free, full-featured JViews eval.

Download now at: <http://jviews.ilog.com>

Add-Ins**Energy Code Analyzer**

A best-practices, Java code audit tool that lets you focus on bigger, more interesting problems by scrutinizing your code line by line and flagging any suspicious departures from corporate standards or Java best practices. It integrates tightly with Eclipse and other IDEs and includes more than 200 built-in Java/J2EE rules—plus you can write your own—as well as auto-fix and more.

eVeloopers Corporation

Tel: +7.812.324.3211

Web: www.evelopers.com

E-mail: vgurov@evelopers.com

Tools**UniMod**

Implements executable UML technology and consists of a UML editor for class and statechart diagrams and run-time environments to execute created models. The editor implements interactive model validation, error highlighting, error quick fixes, autocompletion of labels on diagrams, model execution in one click, and model visual debugging.

Exadel Inc.

Tel: 925.363.9510

Web: www.exadel.com

E-mail: sales@exadel.com

Tools**Exadel Studio**

A powerful Web application development tool that extends Eclipse functionality, allowing you to fully utilize RAD techniques. This cost-effective, simplified solution includes important new features: project development support for JSF, Struts, Spring and Hibernate code assist, code folding for XML and JSP files, and full instant synchronization among editing modes.

Ferenc Hechler Open Source GPL Projects

Web: <http://fjep.sourceforge.net>

E-mail: ferenc_hechler@users.sourceforge.net

Tools**Fat-Jar Eclipse Plug-In**

Deploys an Eclipse Java project into one executable JAR file. In addition to the Eclipse standard jar-exporter, referenced classes and JARs are included in the "Fat-Jar."

genady.net

Tel: 800.999.2734

Web: www.genady.net/rmi/

E-mail: rmi-info@genady.net

Add-Ins**RMI Plugin for Eclipse**

Provides the essential tools for developing RMI applications. Apart from automatically generating the RMI stubs, you can launch your RMI application with all

of the correct parameters (including the CodeBase Editor) and debug flags. The RMI Registry Inspector lists and analyzes the registered objects and their hierarchy, and allows you to call remote methods from within Eclipse.

Genuitec LLC

Tel: 888.267.4176

Web: www.genuitec.com

E-mail: subscriptions@myeclipseide.com

Tools**MyEclipse Enterprise Workbench**

An affordable, feature-rich J2EE IDE for the Eclipse Java IDE that provides full, life-cycle support. For a \$29.95 annual membership, you have access to the Enterprise Workbench, feature releases, online support, and tutorials.

IBM Rational

Tel: 888.SHOP.IBM (746.7426)

Web: www.ibm.com/rational

Yoxos Eclipse Distribution

Easily manage and keep your Eclipse Platform up-to-date from a single source.



Yoxos is a distribution of Eclipse and many of the most popular open-source plugins. With Yoxos you get a pure **Open Source** solution - Eclipse and the included plugins are all available with source code. You can enjoy the flexibility and rich features of the open-source offerings in the Eclipse ecosystem while saving valuable time in the setup and management of your platform mix.

Yoxos aims to increase the return on investment of Eclipse as a strategic platform by minimizing the setup and management costs. Yoxos significantly reduces the time needed for finding, downloading, evaluating, testing and updating plugins. All the plugins are included in a single repository and they have been tested against the included version of Eclipse. Dependencies are automatically installed and conflicts between plugins have already been resolved.

Yoxos is available with enterprise level support and maintenance options.

INNOOPRACT

InnooPract Information Systems

Stephanienstrasse 20

76133 Karlsruhe

Germany

Phone: +49 721 966 2360

Fax: +49 721 966 2362

E-Mail: info@innoopract.com

Web: www.innoopract.com

Free Community Edition

Try Yoxos for free with the Yoxos Community Edition or purchase the Yoxos Developer or Enterprise Editions to take advantage of the full functionality.

Eclipse Products and Services

Tools

IBM Rational ClearCase LT

Provides version control, automated workspace configuration, and parallel development support of development assets ideal for small-to-medium project teams and disconnected usage. It offers seamless integration with leading IDEs, including the open source Eclipse framework, and ensures you can access Rational ClearCase LT capabilities directly from your development environment.

IBM Rational ClearCase

Provides life-cycle management and control of software development assets through integrated version control, automated workspace management, parallel development support, baseline management, and build-and-release management. Seamless integration with leading IDEs, including the open source Eclipse framework, ensures you can access Rational ClearCase capabilities directly from your development environment.

IBM Rational ClearQuest

Enables better insight, predictability, and control of the software development process. Through flexible workflow management and defect-and-change tracking across the application life cycle, you can automate and enforce development processes, manage issues throughout the project life cycle, and facilitate communication between all stakeholders across the enterprise.

IBM Rational ClearCase MultiSite

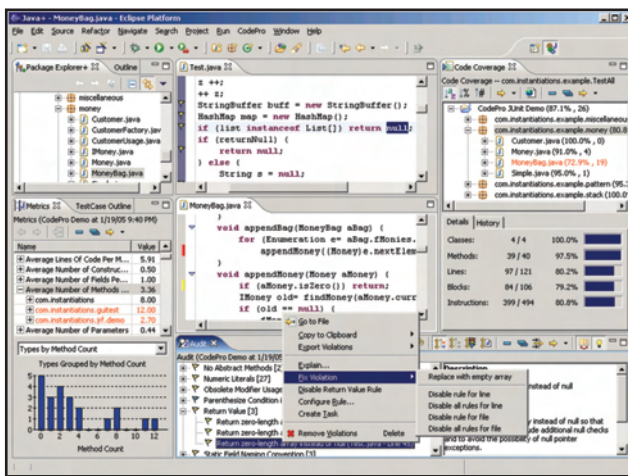
An option to IBM Rational ClearCase that extends life-cycle management and control of software development assets across geographically distributed environments. It enables distributed teams on multiple distributed servers to develop applications in parallel through automatic replication and synchronization of assets and configurations.

IBM Rational ClearQuest MultiSite

An option to IBM Rational ClearQuest that enables better insight, predictability, and control of the software development process across geographically distributed environments. It is an enterprise-class, process-centric solution that enables distributed teams to manage and track activities through automatic replication and synchronization of Rational ClearQuest repositories.

EclipsePro Test & EclipsePro Audit

Automated Code Quality Improvement for Eclipse.



EclipsePro Test™ automates JUnit test case generation allowing developers to easily create comprehensive JUnit regression test cases. Test's Code Coverage facility provides feedback on test case quality.

- Automated JUnit test case generation
- Code coverage analysis
- Create detailed reports & histories
- Generate regression tests & test suites

EclipsePro Audit™ automates the process of building quality into Java software as it's being created. Audit automatically identifies and fixes hundreds of issues, efficiently improving code quality and reliability.

- Detect and correct code quality issues...Automatically
- 700+ rules and metrics/300+ Quick Fixes
- Code metrics with drilldown and triggers
- Custom rules and rule sets
- Ant support for headless operation

FREE Trial Versions.

Download Trial Versions of EclipsePro Test and EclipsePro Audit to experience Continuous Code Quality Improvement in your Eclipse development.

www.instantiations.com/eclipsepro



Instantiations, Inc.

18101 SW Boones Ferry Road
Suite 200

Portland, OR 97224

Phone: (800) 808-3737

Fax: (503) 684-8355

E-mail: info@instantiations.com

Web: www.instantiations.com

Identify Software Inc.

Tel: 800.364.5467; 919.878.3717

Web: www.identify.com

E-mail: info@identify.com

Testing & Performance

AppSight Application Problem Resolution System

Leverages black box software technology to monitor the execution of distributed applications and capture a complete record of application problems. Its console replays black box recordings and helps you identify the root cause of application problems without having to reproduce them in the lab. The product can help teams reduce problem resolution cycles by up to 70 percent.

Infologic

Tel: +04.75.82.1630

Web: www.infologic.com

E-mail: contact@jasperassistant.com

BI/Reporting

JasperAssistant

A visual report designer for JasperReports—a popular open source reporting engine—that is built on top of the Eclipse plug-in architecture. Primarily, it helps you create JasperReports report definition files through an intuitive graphical interface.

Innoo pract

Tel: +49.721.966.2360

Web: www.innoo pract.com

E-mail: info@innoo pract.de

Add-Ins

W4T Eclipse

Enables visual RAD for creating Web-based Java applications. You can create Web-based user interfaces in a fraction of the time compared to other methods through simple, visual, drag-and-drop assembly of widget components. If you prefer visual development, you can finally create Java Web applications using this approach.

Other

Yoxos Eclipse Distribution

Delivers Eclipse and many popular open source plug-ins that are ready for deployment, giving you a pure open source solution. Eclipse and the included plug-ins are all available with source code. You get flexibility and rich features of the open source offerings in the Eclipse ecosystem while saving valuable time in the setup and management of your platform mix.

Intel Corporation

Tel: 503.264.6903

Web: www.intel.com/software/products/index.htm

E-mail: ling.yao@intel.com

Linux

Intel C++ Compiler for Linux

Speeds up applications and protects your development tools investment, and advanced optimization features deliver performance for applications running on the latest Intel processors. It includes source and binary compatibility with GCC 3.2/3.3/3.4 and compatibility with widely used Linux development utilities to support the way developers work.

Intel VTune Performance Analyzer for Linux

Fine-tunes code and displays performance data from the system-wide level down to the source level to optimize across multiple operating system platforms, development environments, and the latest Intel processors. It applies a wide range of profiling mechanisms and a rich set of views. It also includes a sampling technology that uses processor interrupts to identify performance bottlenecks with low overhead.

Jan-Friedrich Mutter

Tel: +49.89.285157

Web: <http://log4e.jayefem.de>

Tools

Log4E

An Eclipse plug-in that helps you set up your logger easily in Java Projects. It assists you in several tasks: logger declaration, logger inserts at certain method entries, substitution of system outs, and modification of already existing logger statements.

Julen Parra

Web: <http://quantum.sourceforge.net>

Add-Ins

QuantumDB

A simple, database-access plug-in that allows you to connect to databases using standard JDBC drivers; review schemas, tables, views, and sequences; look up column, index, and foreign key information; issue ad-hoc queries or other SQL statements against the database; manage, edit, and work with SQL

files; and issue updates, deletes, and inserts using simple, easy-to-use wizards.

Kinesix Software

Tel: 713.953.8300

Web: www.kinesix.com

E-mail: kx_info@kinesix.com

Linux

Sammi Application Development Kit

Its multiprocess architecture provides a graphical interface to view and manage real-time

J2EE Application Development Done Right

An Application Generator and Framework All-In-One

	realMethods	AndroMDA	CodeGenis	MiddleGen	Optima4J	JCorporate
Code Generator						
UML Driven	✓	✓	✓	✓	✓	✗
OMG Committed	✓	✗	✓	✗	✓	✗
Eclipse Plugin	✓	✗	✗	✗	✓	✗
Full Tier Support	✓	✗	✗	✗	✓	✗
Template Driven	✓	✓	✓	✗	✓	✗
Core J2EE Patterns	✓	Not Complete	Not Complete	Not Complete	✓	Not Complete
Supports SOA	✓	✗	✗	✗	✗	✗
Framework						
Security	✓	✗	✗	✗	✗	✗
Resource Pooling	✓	✗	✗	✗	✗	✓
Customizable Cache	✓	✗	✗	✗	✗	✓
Service Locator	✓	✗	✗	✗	✗	✓
JMW Admin	✓	✗	✗	✗	✗	✗
Startup Mgmt	✓	✗	✗	✗	✗	✗

realMethods takes J2EE application generation to the next level. From a single UML diagram, generate complete multi-tiered design pattern based applications, immediately deployable on all popular application servers and databases. Each of your applications is generated on top of our J2EE framework, to enforce consistency from one application to the next.

MDA Compliant - Ensures development is based around a platform independent model captured in UML.

SOA/Web Services Simplified - Quickly generate a fully functional SOA enabled business tier as a complete set of Web Services.

Design Pattern Driven - Generate applications that implement core J2EE patterns such as business objects, business delegates, session façades, DAOs, front controller, transfer objects and assemblers, view helper and composite view.

Includes Key Out-of-the-box Framework Services - Configurable services for security, logging, caching, resource pooling, and more.

Supports & Integrates Key Open Source Projects - Supports and extends such open source projects as Struts, Hibernate, Ant, Velocity, and Log4J.

Easy Application Configuration - Quickly configure an application to add new resources and extend supported functionality.

Source Code Included - realMethods includes the complete source code, backed by warranty and support.

Available as an Eclipse 2.1 and 3.x Plugin, as well as an RCP standalone version.



realMethods, Inc.

8 Bridal Path

Lakeville, MA 02347

Phone: 866.236.5281

Email: info@realmethods.com

Web: www.realmethods.com

Free Evaluation Version

Download a Free Fully Functional Evaluation:

www.realmethods.com

Eclipse Products and Services

data across distributed network environments. As a RAD tool for client/server environments, it reduces time to deployment by cleanly separating the user interface from the application so graphical displays can be developed concurrently without having to recompile code.

Knowledge Dynamics Inc.

Tel: 847.869.1111

Web: www.KDCalc.com

E-mail: Info@KnowledgeDynamics.com

Add-Ins

KDCalc Designer Add-In

Turns your Excel spreadsheets into enterprise business-rules applications for Java, .Net, Eclipse, WebLogic, and HTML. It compiles formulas and data into a fast, scalable, thread-safe executable, and it also generates complete ASP.Net, ASP Classic, JSP, and HTML Web applications as a user interface for applications. Use it to build enterprise applications faster, cheaper, and more accurately.

Boost your J2EE Development Productivity:

Fast, Cheap and Easy

MYECLIPSE ENTERPRISE WORKBENCH	
The New Standard for J2EE Development	1st Place Ranking
120,000 MEMBERS	➤ UML Modeling
5,000 COMPANIES	➤ Visual Dev. Tools
130 COUNTRIES	➤ JSF, Struts & Tapestry
\$29.95 Free 30-day Trial	➤ Hibernate Mapping
	➤ Database Tools
	➤ Smart Editors
	➤ Application Server Integration

MyEclipse Enterprise Workbench seamlessly extends the Eclipse platform with over 500 basic and advanced productivity features for UML, J2EE, Web, XML and Database development. MyEclipse includes RAD tools such as: UML round-trip development, visual Struts and JSF Web-Flow designers, full featured WYSIWYG Web Designer, DB ERD visualization and a comprehensive array of application server connectors to optimize development, deployment, testing and portability.

The \$29.95 MyEclipse annual subscription includes professional technical support and free upgrades. Equip your entire development team with MyEclipse for less than the cost of a single user license for any comparable product.



Genuitec L.L.C.

2505 Powderhorn Dr.

Plano, Texas 75025

Tel: (888) 267-4176

Fax: (214) 853-4284

www.myeclipseide.com

Marcus Nylander Open Source

Web: <http://sourceforge.net/projects/vssplugin/>

Other

VSS Plugin

Provides a Microsoft Visual SourceSafe (VSS) team provider for Eclipse 3.x. The plug-in is well integrated in the IDE environment and provides support for all daily VSS operations.

Markus Oliver Junginger

Web: www.junginger.biz

Tools

FreeMem

A graphical memory monitor that features a short-term memory monitor showing the last minute, long-term memory monitor showing the last two hours, manual and automatic garbage collection, graphical memory indicator in the title bar, and references to adjust display and behavior.

Add-Ins

RSS View

A graphical memory monitor that lets you keep track of any news available as an RSS 2.0 feed. Stay up to date with the news of the world, the newest geek stuff, or anything you are interested in, without having to visit the Web sites. News is delivered directly into your Eclipse workbench.

Neogen Software Solutions

Tel: 91.44.55175128

Web: www.neogensoft.com

Tools

FireAntz

A plug-in that shows Ant-task dependencies, allows you to visually execute them, and was the winner of the 2003 International Challenge for Eclipse contest in the Open category.

Nils Winkler

Web: <http://accessmodifier.sourceforge.net/>

Add-Ins

AccessModifier Plug-in for Eclipse

A plug-in that allows you to change the visibility (public, protected, default, and private) and other modifiers (final, static, and synchronized) of Java classes, interfaces, methods, and fields in the workbench's Outline, Members, and Package Explorer views.

OC Systems Inc.

Tel: 703.359.8160

Web: www.ocsystems.com

E-mail: info@ocsystems.com

Testing & Performance

Hitchhiker

Trace, profile, or find memory leaks in any C/C++ application using this free Eclipse plug-in that lets you instrument

Free 30-Day Trial

Don't just take our word for it.

Download a full-featured 30-day trial of

MyEclipse Enterprise Workbench at

www.myeclipseide.com

Eclipse Products and Services

any C/C++ application on the fly, trace and profile the application at near full execution speed, and visualize application internals using the Eclipse Workbench. It can be used throughout the application development life cycle, beyond development into alpha, beta, production test, and production.

OpenRules Inc.

Tel: 732.662.7233

Web: <http://openrules.com>E-mail: info@openrules.com**Tools****OpenRules**

A full-scale, open-source, business-rules management system that uses a combination of Microsoft Excel, Java, and Eclipse. It enables business analysts to work in concert with software developers to create and maintain dynamic, rules-based Web applications with complex business and presentation logic.

optadat@.com

Tel: +49.201.31.96.521

Web: www.optadata.comE-mail: r.rauschenbach@optadata.com**Add-Ins****eva/3 Application Builder**

Assumes responsibility for the design of forms and reports through an integrated GUI builder, the execution of procedures, and the handling of diverse relational SQL databases through JDBC interfaces.

Orinda Software Ltd.

Tel: 510.588.4631

Web: www.orindasoft.com**Add-Ins****OrindaBuild 5.0**

Generates Java source code to access tables, stored procedures, packages, functions, and sequences in Oracle databases. It generates matching Java to run any SQL statement and turns the results of SQL queries into arrays of records. It also creates a matching Data Access Object Factory class and Apache Axis-compatible Web service classes for chosen SQL statements and PL/SQL.

PatternSet Software Inc.

Tel: 905.472.1899

Web: www.patternset.com**Add-Ins****Metadata Transformer/Generator (MTG)**

Enables code generation from Eclipse Modeling Framework models, including models representing XML schemas and UML2 models. It uses a unique "transformation model" approach that allows the association of transformers (Java classes) to model elements.

Plog4u

Tel: +05.719.519833

Web: www.plog4u.org**Tools****Plog4u Wikipedia Editor**

An Eclipse editor plug-in for a local, personal Wiki with Wikipedia syntax support. It features syntax highlighting, content outline and assist, templates, download/upload articles from MediaWiki server, SQL access,

HTML preview and insert, and Java/PHP link2wiki.

PureEdge Solutions Inc.

Tel: 888.517.2675

Web: www.PureEdge.comE-mail: Info@PureEdge.com**Add-Ins****PureEdge Designer**

An easy-to-use, e-form design environment

Register Online
www.eclipseworld.net



The industry's first independent conference for enterprise software developers and development managers using Eclipse tools and technologies

eclipse

WORLD

The Enterprise Development Conference

August 29-31, 2005

The Roosevelt Hotel • New York City

Over 50 Classes To Choose From!



Early Bird Rates Expire July 29!



BZ Media is a member of the Eclipse Foundation.

EclipseWorld™ is a trademark of BZ Media LLC. Eclipse™ is a trademark of Eclipse Foundation Inc.

www.eclipseworld.net

Eclipse Products and Services

that supports native-code editing and enables you to use drag and drop to create precision layout forms with an open and accessible XML-schema-derived XForms data model. It leverages the Eclipse development environment to deliver advanced forms-based applications to automate business processes and integrate across line-of-business applications and IT infrastructure.

realMethods

Tel: 866.236.5281

Web: www.realmethods.com

E-mail: sales@realmethods.com

Tools

realMethods Framework

An MDA-compliant, J2EE application generator that compliments and leverages our J2EE application framework. It is available as both an Eclipse plug-in and a stand-alone application. You can use your favorite UML tool to generate more than 75 percent of your application functionality, with support for all major application servers and RDMS systems. The generated application is multi-tiered and design-pattern based.

Recursion Software Inc.

Tel: 972.731.8800 ext. 115

Web: www.recursionsw.com

E-mail: clewis@recursionsw.com

Tools

Cinergi Multilanguage Application Integration Platform

A complete multilanguage applications integration tool (ESB) for building composite applications and offers a fast and secure high-performance, run-time environment as well as support for SOAP/WSDL-based Web services. It has an easy-to-use graphical user interface and supports Java, C++, .Net, CORBA, and WSDL, and it works with all major IDEs.

C++ Toolkits

C++ class libraries that are portable, reusable class libraries that support the development of multithreaded applications. Fully tested and commercially hardened, they will save you time and effort. They include popular features such as pipe, network, io, Unix, Web, math time, thread, and many more.

Voyager Distributed Application for Java Applications

A framework for the development of distributed Java applications. For existing applications you can quickly and easily establish communication among components (objects) within an application or among applications running in a variety of operating systems environments. Build new distributed Java applications with tight security, fast transaction processing, and flexible messaging.

Add-Ins

JGL Toolkit

As Java's answer to the C++ Standards Template Library (STL), it finds errors at

compile time, not run time, with type-safe collections. You can produce simpler code with no more class casts from collections. There are hundreds of classes to supplement JDK 5.0; a single JAR file containing all JGL classes; and a comprehensive HTML user guide packed with more than 100 examples.

.Net Toolkit

A powerful add-on for the .Net (C#) Framework that provides a series of advanced collections and more than 50 generic algorithms. It is designed to extend the features found in the .Net Framework and is ideal for enterprise C# developers. It has a single DLL file containing all C# ToolKit classes and a comprehensive HTML user guide packed with more than 100 examples.

Scapa Technologies

Tel: +44.131.652.3939

Web: www.scapatech.com

Testing & Performance

Scapa Test and Performance Platform 3.1

An innovative and powerful application-performance testing, diagnosis, and monitoring product applicable across a wide range of commercial software technologies at multiple points in the application life cycle. It encompasses these key technologies: load testing, diagnosis, test asset management, monitoring, and integration.

Sleepycat Software Inc.

Tel: 510.597.2129

Web: <http://sleepycat.com>

E-mail: lj@sleepycat.com

Embedded

Berkeley DB

A developer database that is open-source and runs on all major operating systems, including embedded Linux, Linux, MacOS X, QNX, Unix, VxWorks, and Microsoft Windows. It delivers the core data management functionality, power, scalability, and flexibility of enterprise relational databases but without the overhead of a query-processing layer.

SlickEdit Inc.

Tel: 919.473.0070

Web: www.slickedit.com

E-mail: kfranklin@slickedit.com

Add-Ins

SlickEdit Plug-in V9

Provides a powerful set of symbol analysis and navigation tools to save time and maximize control over code. Context tagging automatically performs expression type, scope, and inheritance analysis as you code. Advanced navigation includes the ability to view and jump to a definition, view and jump to references, and to set unlimited bookmarks.

Sourceforge.net

Tel: + 33.6.64.10.92.09

Web: <http://sourceforge.net/projects/merlingenerator/>

Add-Ins

Merlin

A free Eclipse plug-in, based on EMF, that provides enhanced code generation and model-transformation tools. When working in Eclipse with models that aren't EMF's Ecore models, you'll notice that there is no native-code generation available for these models. It helps you build your EMF-based DSLs and assists you in customizing your code generation.

Spectrum Software Inc.

Tel: 770.448.8662

Web: www.spectrumscm.com

E-mail: info@spectrumsoftware.net

Add-Ins

SpectrumSCM

Brings full-featured, source-configuration management to Eclipse as a team support provider and provides significant flexibility using the Eclipse IDE to undertake parallel development; handle branching issues; change management; and manage, track, and audit tasks associated with these changes more efficiently and directly from within their Eclipse environment.

Stanford SUIF Compiler Group

Web: <http://suif.stanford.edu/pub/keepresident/>

Add-Ins

KeepResident plugin

A simple plug-in for Eclipse that uses two functions in the Microsoft Windows API—SetProcessWorkingSetSize() and VirtualLock()—to encourage Windows to keep more of the Eclipse Java process in physical RAM. It also attempts to attack the problem of Eclipse's occasional sluggishness and lag, where it won't accept keystrokes or redraw a window for up to 10–20 seconds.

Stefan Sigurdsson

Web: www.phpclipse.de

Add-Ins

PHPEclipse

An integrated development environment for creating dynamic, data-driven Web sites with PHP, Apache, and MySQL on Microsoft Windows, Linux, or Mac OS X.

Web Orientated Technologies

Web: www.webotech.co.uk

Tools

EPIC Perl Development Integration

An open source Perl IDE for the Eclipse platform that features syntax highlighting, on-the-fly syntax check, content assist, perldoc support, source formatter, template support, regular expression plug-in, and a Perl debugger.

Eclipse Products and Services

Eclipse Foundation Member List

The Eclipse Foundation boasts a thriving membership that continues to grow. The list of members—current through May 2005—is organized by strategic members who collaborate on the platform but compete with commercial solutions, the Eclipse ecosystem that is made up of providers of add-ins, and Eclipse Foundation associate members.

STRATEGIC MEMBERS

Actuate

www.actuate.com

BEA

www.bea.com

Borland

www.borland.com

Computer Associates

www.ca.com

Hewlett-Packard

www.hp.com

IBM

www.ibm.com/us/

Intel

www.intel.com

Montavista Software

www.mvista.com

SAP

www.sap.com

Scapa Technologies

www.scapatech.com

Serena Software

www.serena.com

Sybase

www.sybase.com

Wind River

www.windriver.com

ADD-IN PROVIDERS

Acucorp

www.acucorp.com

Agitar Software

www.agitar.com

Aldon

www.aldon.com

Aonix

www.aonix.com

AvantSoft

www.avantsoft.com

Catalyst Systems Corporation

www.openmake.com

CollabNet Inc.

www.collabnet.com

Compuware

www.compuware.com

DataMirror

www.datamirror.com

DDC-I, Inc.

www.ddci.com

Discovery Machine Inc.

www.discoverymachine.com

Embarcadero Technologies

www.embarcadero.com

ENEA Embedded Technology AB

www.enea.com

Ericsson

www.ericsson.com

ETRI (Electronics and Telecommunications Research Institute)

www.etri.re.kr/e_etri/

Exadel

www.exadel.com

Fujitsu Limited

www.fujitsu.com/global/

Genuitec LLC

www.genuitec.com

Hitachi Ltd., Software Division

www.hitachi.com

ILOG

www.ilog.com

INNOOPRACT

www.w4toolkit.com

Inpriva

www.inpriva.com

Instantiations Inc.

www.instantiations.com

ITG Inc.

www.itginc.net

iWay Software

www.iwaysoftware.com

JasperSoft Corporation

www.jaspersoft.com

JBoss Inc.

www.jboss.com

Kinzan Inc.

www.kinzan.com

Klocwork Inc.

www.klocwork.com

Logic Library

www.logiclibrary.com

Lombardi Software

www.lombardisoftware.com

MI Global Solutions

www.mlglobal.com

M7 Corporation

www.m7.com

Mentor Graphics Corporation

www.mentor.com

Mercury Interactive

www.mercury.com

Meta-I GmbH

www.eurostep.com

Micro Focus

www.microfocus.com

MKS Inc.

www.mks.com

Motorola

www.motorola.com

mValent

www.mvalent.com

Novell

www.novell.com

NTT Comware

www.nttcom.co.jp/

OC Systems

www.ocsystems.com

Omodo

www.omondo.com

Optena Corporation

<http://optena.com/>

Oracle

www.oracle.com

PalmSource Inc.

www.palmsource.com

Parasoft Corporation

www.parasoft.com

Pegasystems

www.pegas.com

Progress Software

www.progress.com

PureEdge

www.pureedge.com

QNX Software Systems

www.qnx.com

Real-Time Innovations Inc.

www.rti.com

Red Hat Inc.

www.redhat.com

SAS Institute

www.sas.com

Secure Software

www.securesoftware.com

SlickEdit Inc.

www.slickedit.com

Soft Landing Systems

www.softlanding.com

Symbian

www.symbian.com

Teamstudio Inc.

www.teamstudio.com

Technologic Arts Inc.

www.tech-arts.co.jp/

Telelogic

www.telelogic.com

Tensilica Inc.

www.tensilica.com

Texas Instruments

www.ti.com

THALES

www.thalesgroup.com

TimeSys Corporation

www.timesys.com

Unisys

www.unisys.com

VA Software

<http://vasoftware.com/>

Versata Inc.

www.versata.com

Wasabi Systems Inc.

www.wasabisystems.com

webMethods Inc.

www.webmethods.com

ASSOCIATES

Addison Wesley

www.aw-bc.com

ACM Queue Magazine

www.acmqueue.org

BZ Media LLC

www.bzmedia.com

Communications and Media Arts**Eclipse Plug-In Central (EPIC)**

www.eclipseplugincentral.com

Fawcette Technical Publications

www.ftponline.com

FOKUS Institute

www.fokus.gmd.de/home/

ObjectWeb Consortium

www.objectweb.org

OMG

www.omg.org

Open Systems Publishing LLC

www.opensystems-publishing.com

The RTC Group

www.rtcgroup.com

SocialPhysics.org

<http://socialphysics.org/>

Tsinghua University

www.tsinghua.edu.cn/